

AUSTRALIAN PRISONS PROJECT

Community Corrections

Statistics and Charts

Jonathan Stephens
Courtney Young
Alex Steel
Melanie Schwartz

Sources are acknowledged at the end of the document.

TABLE OF CONTENTS

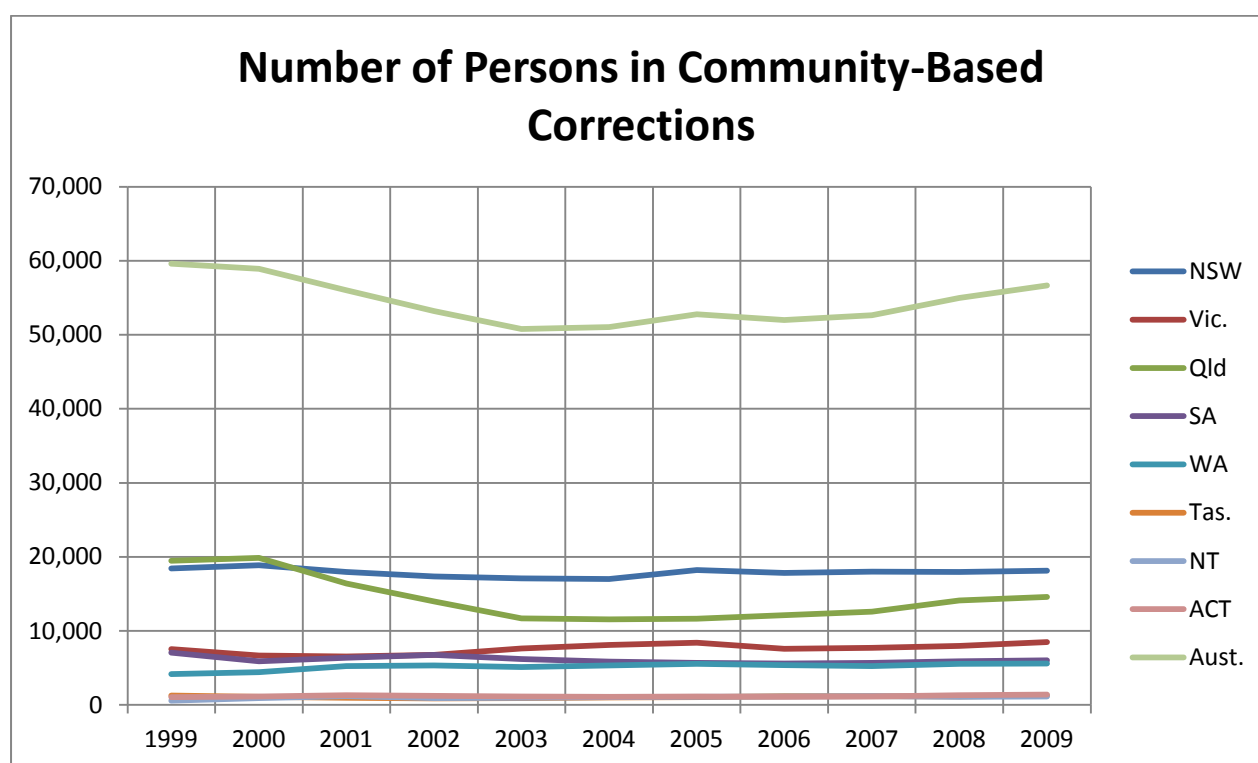
Community Based Corrections	3
Number of persons in community-based corrections per state.....	3
Imprisonment and Community Corrections per 100,000 by state.....	4
Persons in Community-Based Corrections per 100,000 Adult Population.....	4
State by State Comparison.....	6
Gender comparisons	11
Community Based Corrections - Rate per 100,000 adult population by State/Territory and sex.	11
Table of Figures	15

COMMUNITY BASED CORRECTIONS

NUMBER OF PERSONS IN COMMUNITY-BASED CORRECTIONS PER STATE

	NSW	Vic.	Qld	SA	WA	Tas.	NT	ACT	Aust.
1999 ¹	18,448	7,559	19,464	7,059	4,158	1,266	586	1,072	59,610
2000 ²	18,876	6,667	19,867	5,880	4,441	1,114	922	1,142	58,907
2001	17,958	6,563	16,385	6,386	5,232	952	1,195	1,330	56,000
2002	17,340	6,755	13,969	6,764	5,341	896	908	1,230	53,203
2003	17,104	7,619	11,670	6,215	5,117	939	967	1,156	50,787
2004	17,005	8,119	11,577	5,870	5,330	1,004	1,042	1,102	51,049
2005	18,200	8,384	11,667	5,672	5,553	1,067	1,110	1,128	52,782
2006	17,843	7,601	12,124	5,597	5,395	1,184	1,155	1,082	51,981
2007	18,002	7,710	12,584	5,671	5,229	1,159	1,173	1,138	52,665
2008	17,954	7,950	14,120	5,888	5,545	1,143	1,100	1,301	55,001
2009	18,137	8,479	14,608	6,021	5,595	1,272	1,149	1,394	56,654

Figure 1 Number of Persons in Community-Based Corrections



¹ Figures for 1999 calculated from 2000 publication (average of Sep-Dec quarters for that year).

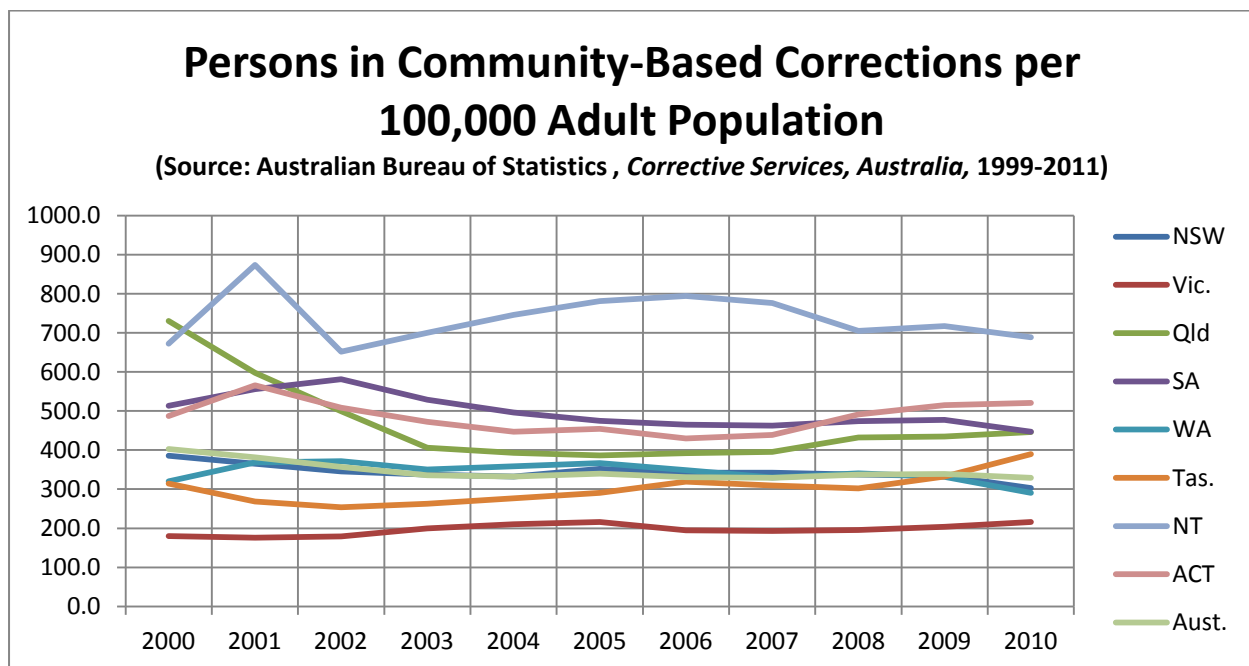
² Figures for 2000 has been calculated from 2000+2001 publications (average of March-Dec quarters for that year).

IMPRISONMENT AND COMMUNITY CORRECTIONS PER 100,000 BY STATE

PERSONS IN COMMUNITY-BASED CORRECTIONS PER 100,000 ADULT POPULATION

YEAR	NSW	Vic.	Qld	SA	WA	Tas.	NT	ACT	Aust.
1999 ³	379.0	205.5	722.7	618.0	297.7	354.6	425.0	460.2	410.9
2000 ⁴	385.2	179.8	730.0	513.1	320.4	314.4	672.1	487.2	403.1
2001	364.7	176.0	597.3	555.7	368.5	268.4	873.9	565.9	381.1
2002	345.6	179.1	499.4	581.1	371.7	253.4	651.9	508.2	356.5
2003	337.4	199.5	406.4	528.8	350.5	262.9	699.8	472.2	335.6
2004	332.4	210.2	392.6	495.7	358.5	276.9	745.7	447.1	332.6
2005	352.3	216.0	386.5	475.1	366.7	290.8	781.3	454.1	339.8
2006	341.9	194.7	392.2	464.7	349.0	319.5	794.1	430.1	330.4
2007	342.3	193.5	395.3	462.7	330.1	309.3	776.4	438.4	328.7
2008	337.3	195.7	432.4	473.7	340.6	301.9	704.9	491.1	337.0
2009	333.8	203.4	434.3	477.6	331.6	332.4	717.1	515.0	338.7
2010	302.7	215.8	446.1	446.7	290.7	389.5	688.5	520.4	328.7
2011	286.9	206.6	432.3	431.6	247.8	441.3	633.2	500.4	313.2

Figure 2 Persons in Community-Based Corrections per 100,000 Adult Population



³ Figures for 1999 calculated from 2000 publication (average of Sep-Dec quarters for that year).

⁴ Figures for 2000 has been calculated from 2000+2001 publications (average of March-Dec quarters for that year).

Figure 3 Australia - Imprisonment and Community Corrections per 100,000 Adult Population

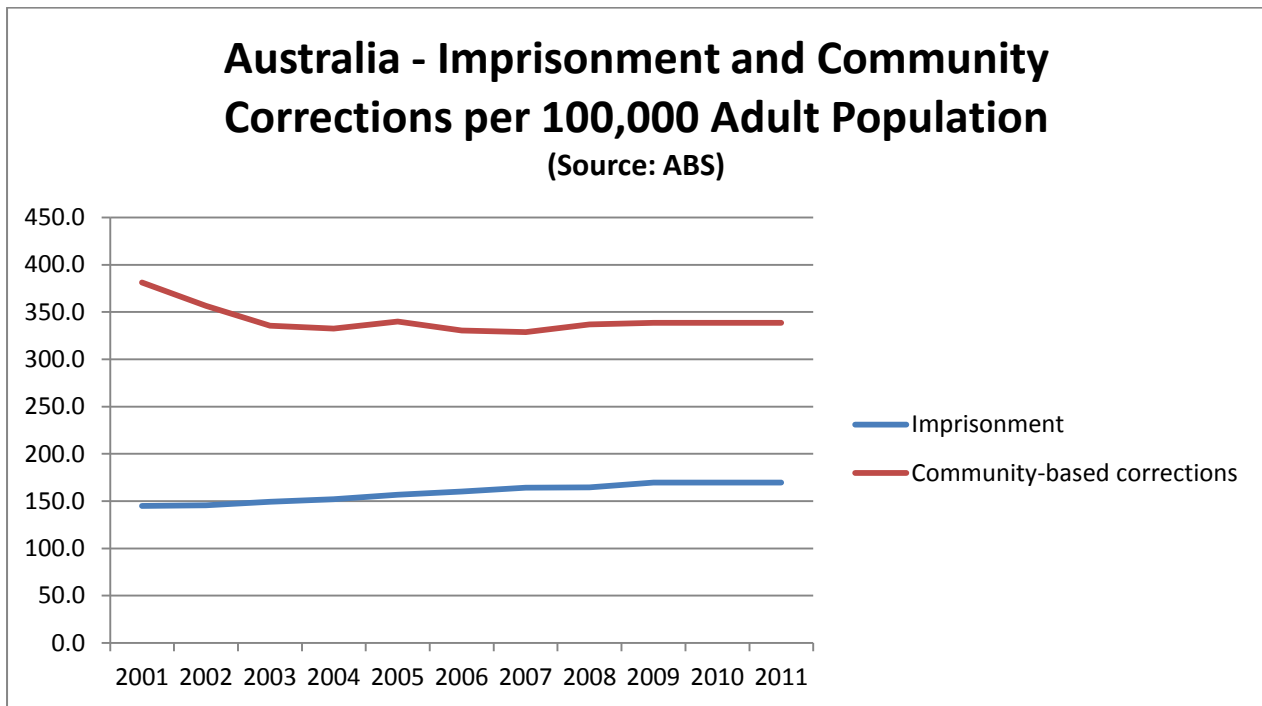
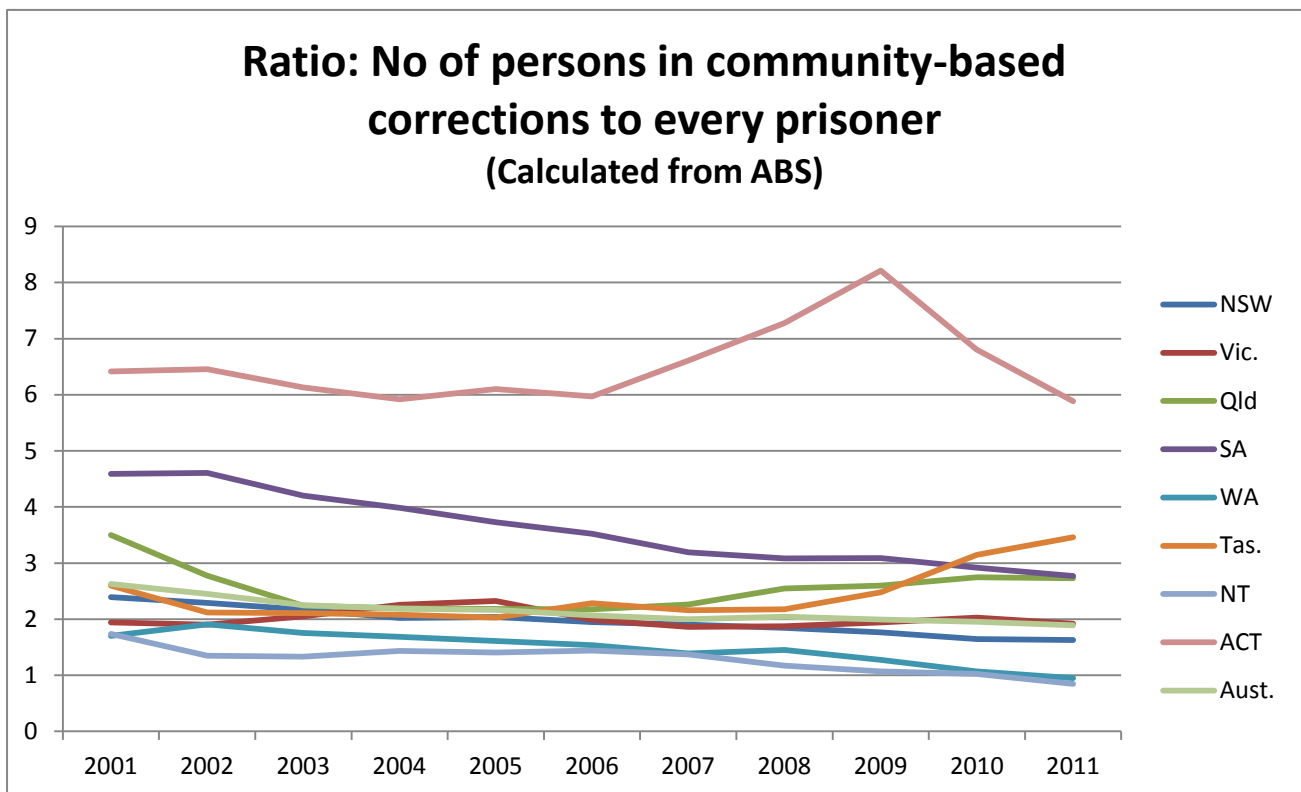


Figure 4 Ratio: No of persons in community-based corrections to every prisoner



SOURCE:

Australian Bureau of Statistics , *Corrective Services, Australia, 1999-2011.*

STATE BY STATE COMPARISON

Figure 5 NSW - Imprisonment and Community Corrections per 100,000 Adult Population

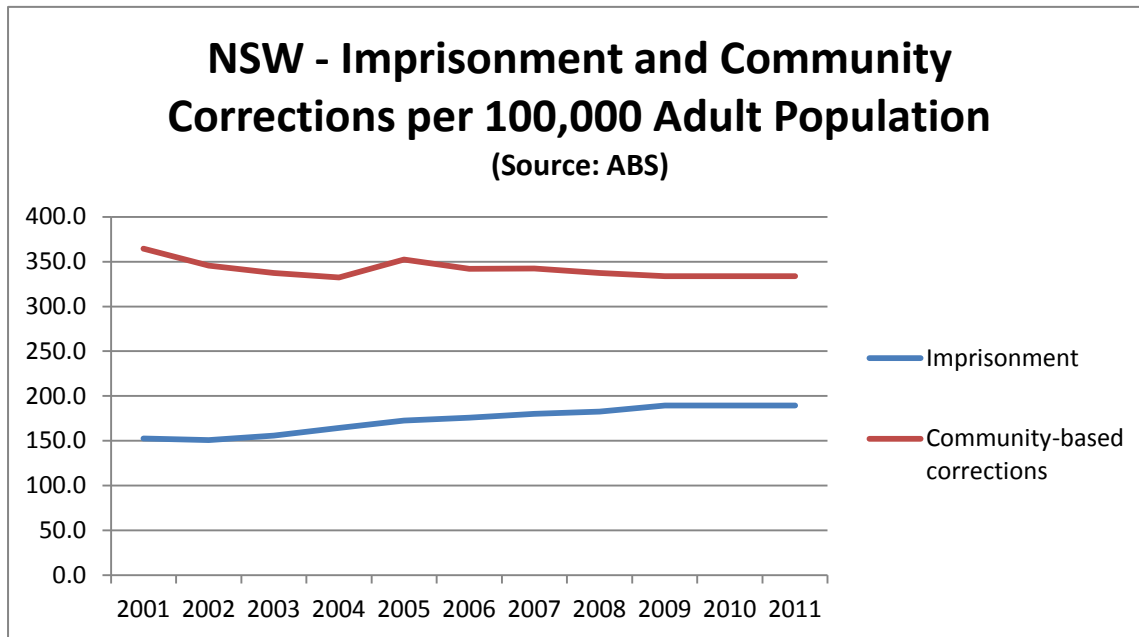


Figure 6 Vic - Imprisonment and Community Corrections per 100,000 Adult Population, 2002-2010

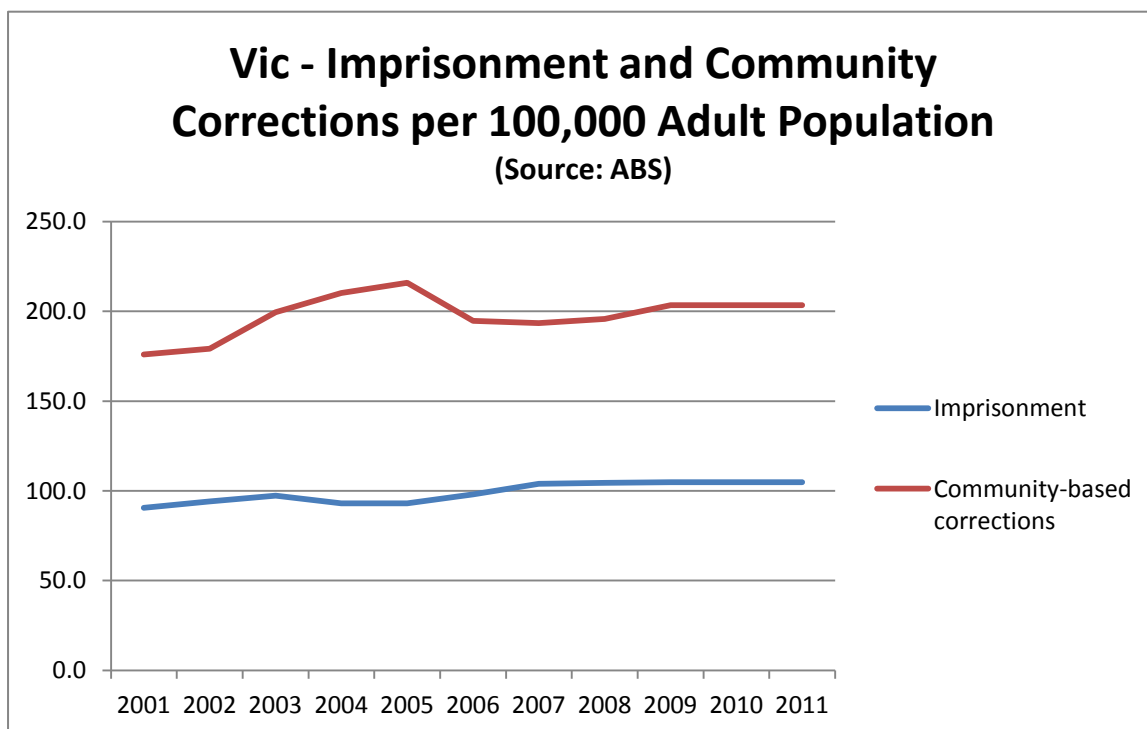


Figure 7 Qld - Imprisonment and Community Corrections per 100,000 Adult Population, 2002-2010

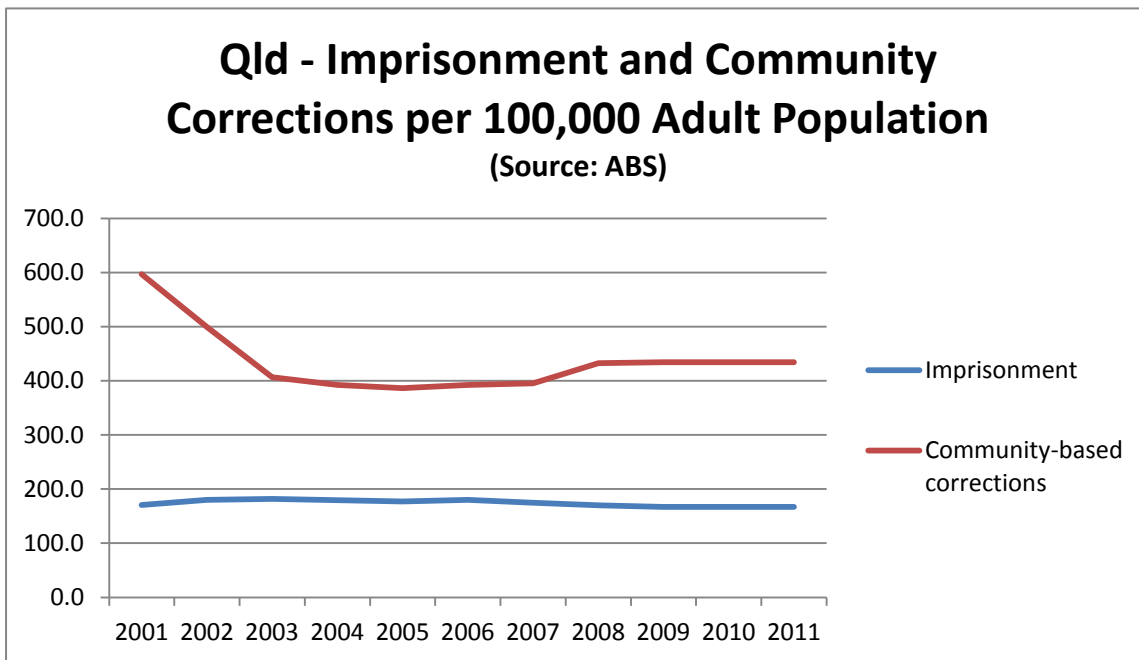


Figure 8 SA - Imprisonment and Community Corrections per 100,000 Adult Population

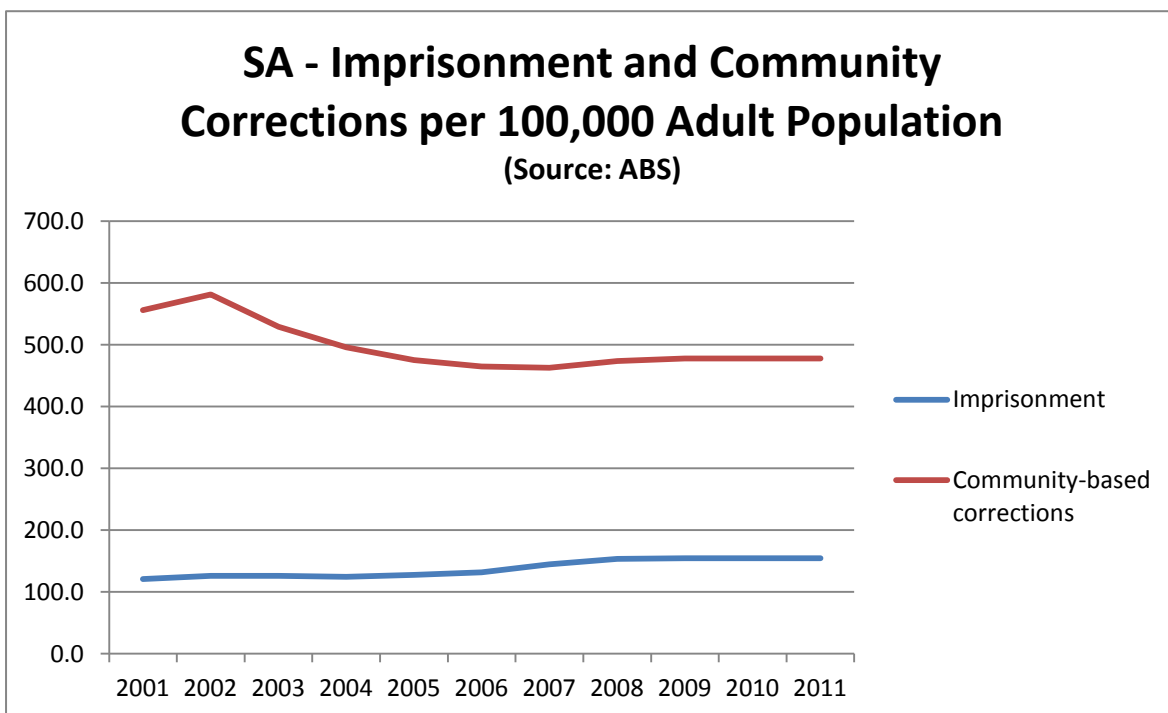


Figure 9 WA - Imprisonment and Community Corrections per 100,000 Adult Population

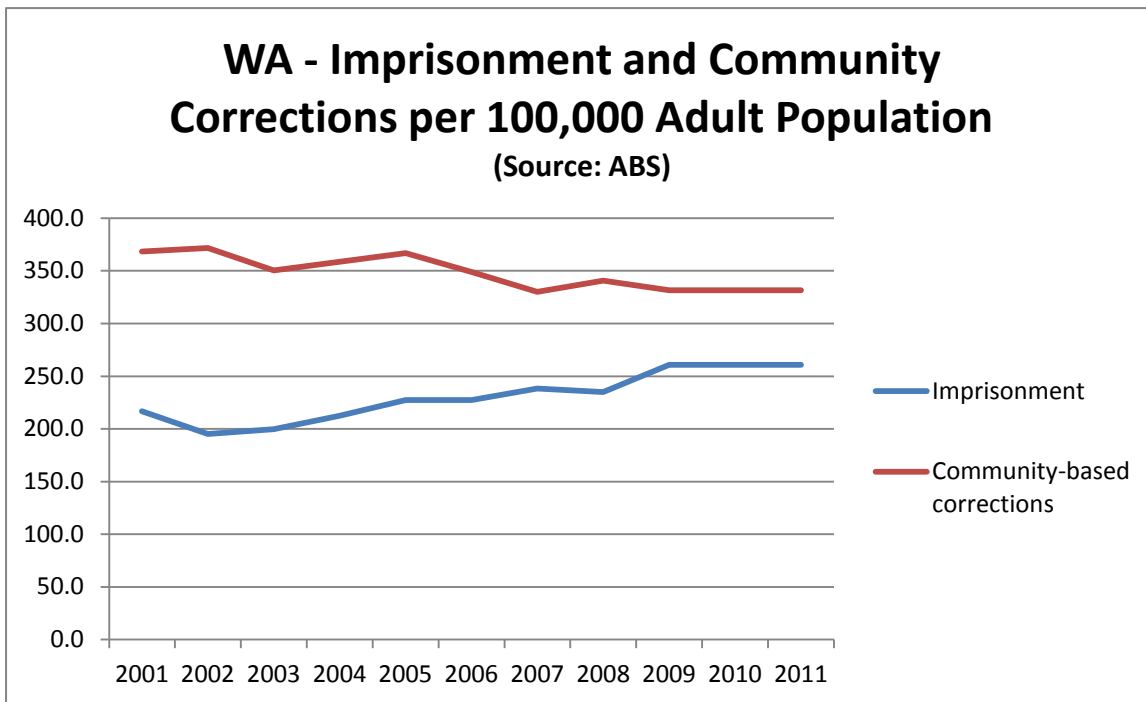


Figure 10 Tas - Imprisonment and Community Corrections per 100,000 Adult Population

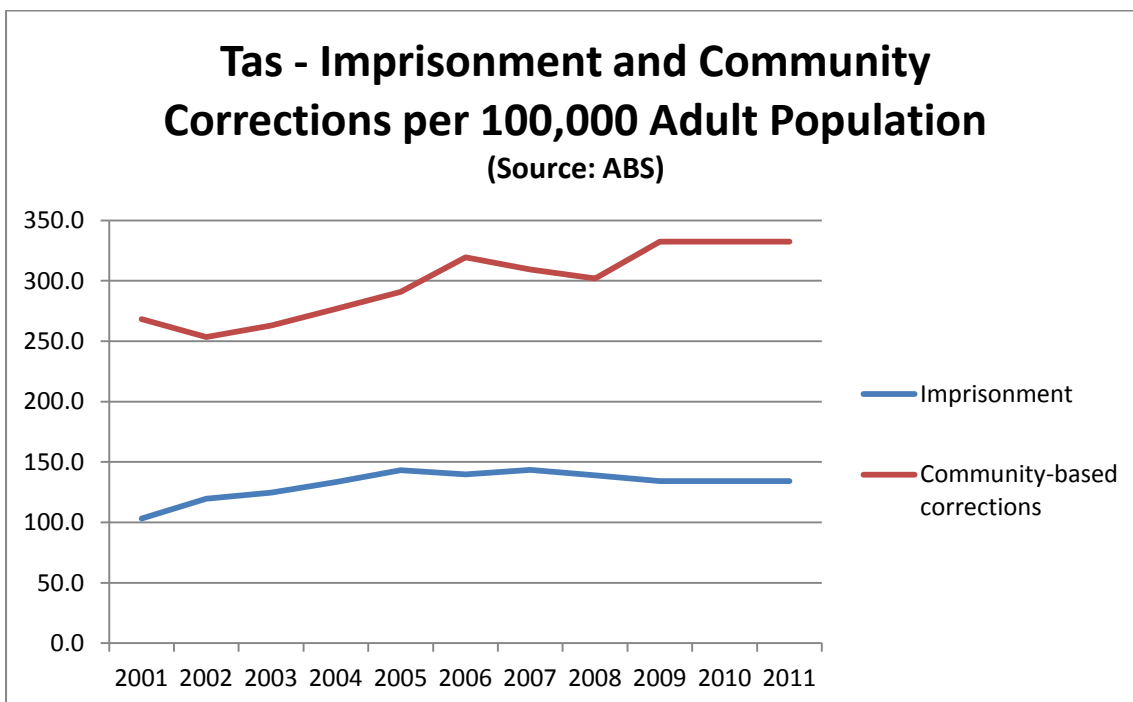


Figure 11 NT - Imprisonment and Community Corrections per 100,000 Adult Population

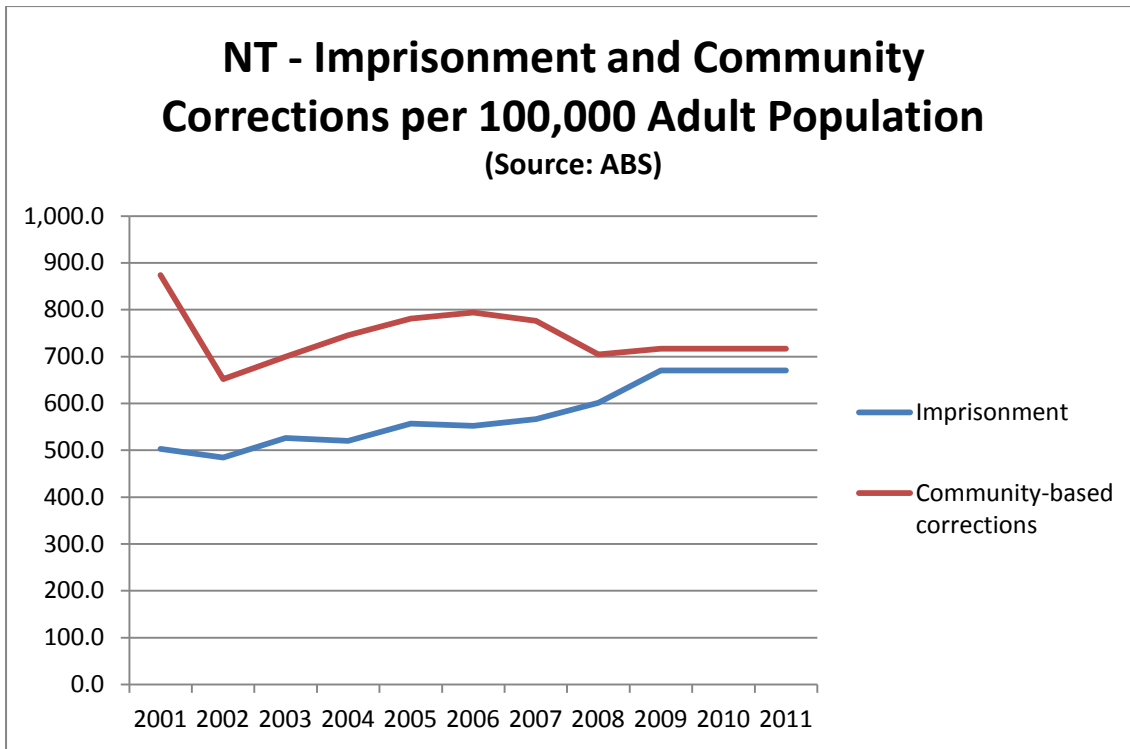


Figure 12 ACT - Imprisonment and Community Corrections per 100,000 Adult Population

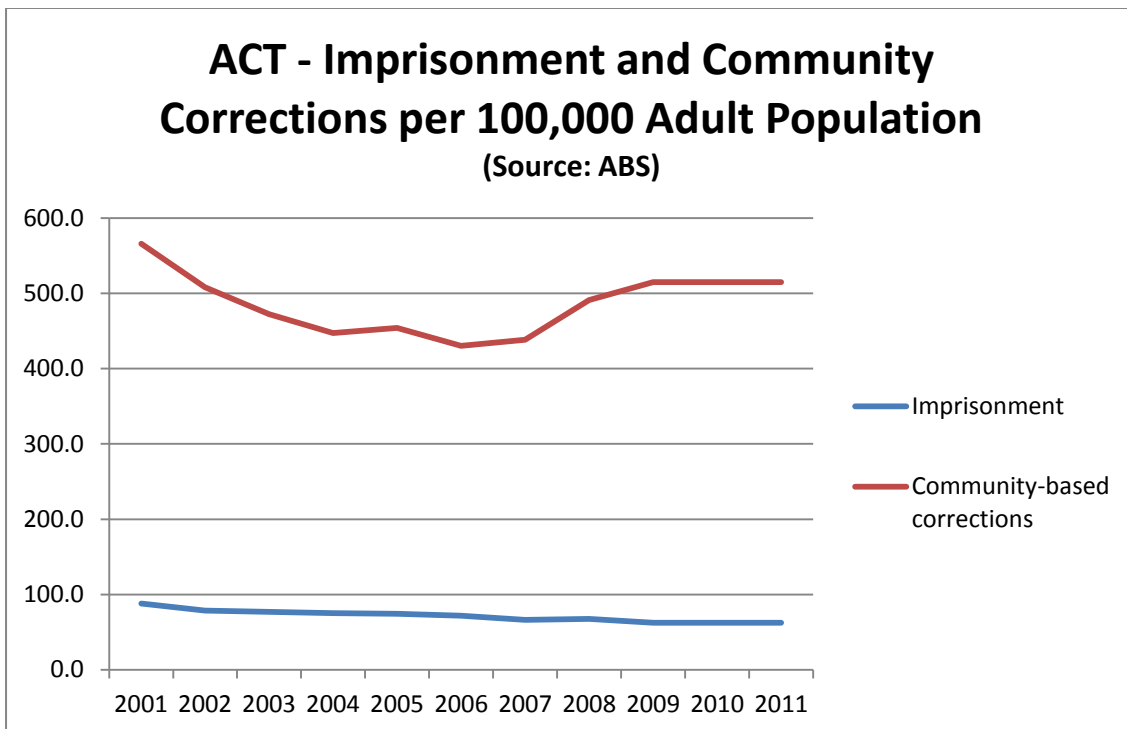
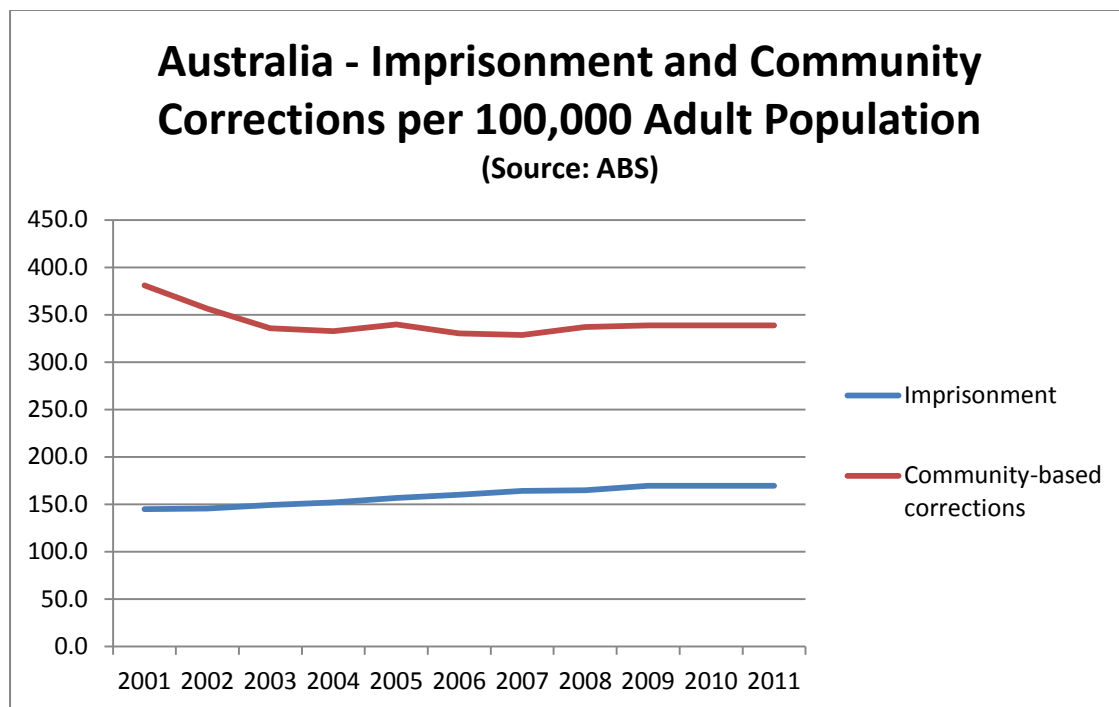


Figure 13 Australia - Imprisonment and Community Corrections per 100,000 Adult Population



GENDER COMPARISONS

COMMUNITY BASED CORRECTIONS - RATE PER 100,000 ADULT POPULATION BY STATE/TERRITORY AND SEX.

Community Based Corrections - Rate per 100,000 adult population by State/Territory and sex.									
MALES									
	NSW	VIC	QLD	SA	WA	TAS	NT	ACT	Aust.
1999*	644.9	345.7	1159.2	965.5	454.4	605.4	708.4	792.5	674.2
2000*	648	294.2	1200.9	750.6	496.1	516.3	1474.7	864.1	664.3
2001*	624.4	290.3	957.6	901	567.9	457	1446.3	940	627.9
2002	594.5	295.5	802.8	949.1	584.7	422.3	1116.4	875.1	591.0
2003*	579.5	327.7	653.4	872.2	543.3	439.3	1180.9	826.9	556.2
2004	572.6	342.4	625.9	820.1	559.6	462.2	1,234.0	776.8	550.4
2005	606.2	359.2	610.8	790.5	572.7	475.4	1,296.4	783.2	563.3
2006	588.9	326.1	616.9	769.9	545.6	517.5	1,306.7	740.5	547.3
2007	588.6	320.2	629.2	764.7	512.8	500.7	1,307.0	766.0	544.2
2008	577.8	323.4	697.4	782.0	528.7	492.6	1,181.4	844.5	557.9
2009	572.5	339.7	697.2	795.2	514.4	545.0	1,166.4	875.1	560.9
2010	518.7	359.8	718.5	737.6	441.9	640.3	1,145.6	887.0	543.0
2011	494.5	342.8	698.3	717.3	382.2	718.9	1,036.4	860.5	519.2
FEMALES									
	NSW	VIC	QLD	SA	WA	TAS	NT	ACT	Aust.
1999*	111.6	72	314.3	311.2	136	112.9	98.1	162.8	157.8
2000*	112	59.9	321.3	191	134.6	103.7	226.2	175.9	147.8
2001*	107.3	59.1	242.8	216.2	169.3	90.4	221.3	200.2	136.7
2002	101.5	62.3	204.9	220.4	161	93.9	136.4	156.7	126.8
2003*	98.2	67.7	166.8	192.9	160.5	96.1	165	133.6	117.9
2004	97.0	70.0	164.3	179.1	160.1	101.2	196.6	130.7	116.9
2005	103.6	76.4	166.2	169.8	162.8	115.3	201.3	137.4	121.3
2006	100.0	67.4	170.6	170.4	153.8	131.2	211.0	130.8	118.4
2007	102.3	70.7	165.5	173.2	146.5	127.7	191.4	121.7	118.3
2008	103.6	72.4	172.2	178.7	150.5	121.0	184.1	148.9	121.7
2009	101.3	72.1	175.6	173.5	145.3	130.7	192.6	165.4	121.2
2010	92.3	76.6	178.2	167.6	136.7	151.5	194.3	163.4	119.2
2011	85.4	75.3	170.8	157.2	110.7	177.9	198.1	148.8	112.1

*Rates for 1999 and 2000 are for the September quarter. Rates for 2001-2003 are averages of all quarters for the year

Figure 14 Community Based Corrections – Male rate per 100,000 adult population by State/Territory

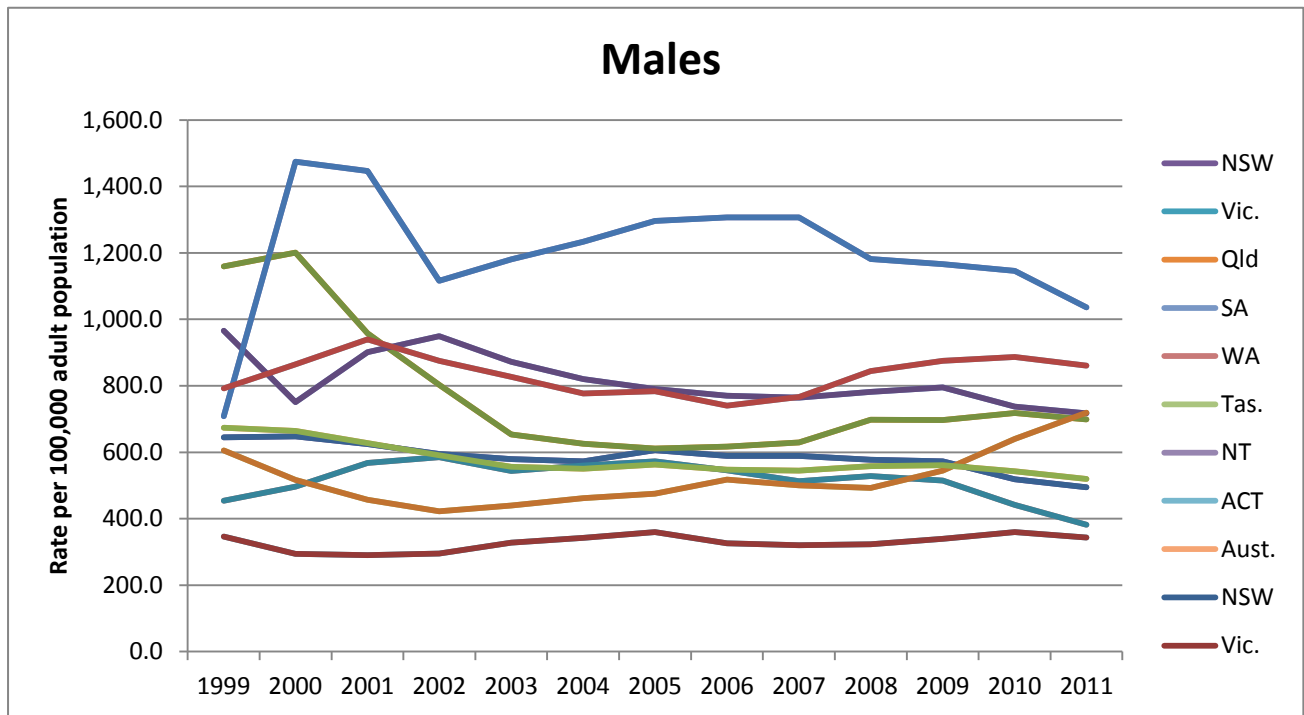
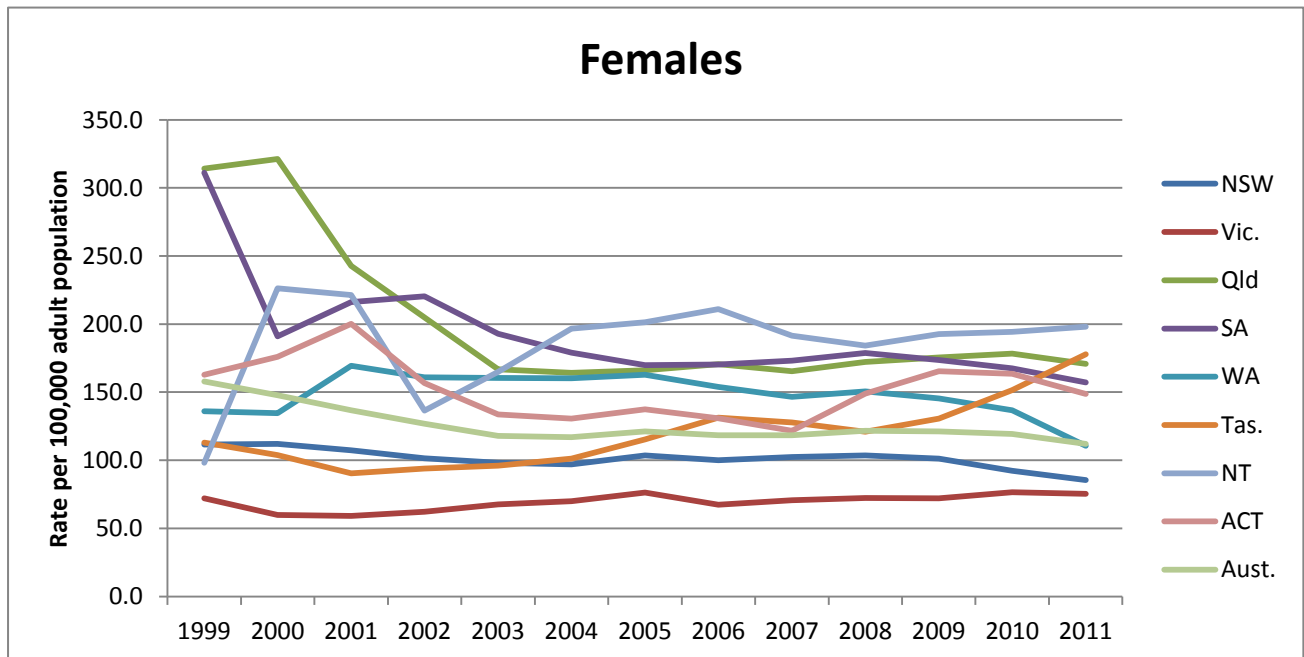


Figure 15 Community Based Corrections – Female rate per 100,000 adult population by State/Territory



SOURCES

Australian Bureau of Statistics (ABS)

ABS, *Corrective Services, Australia*, (1999 – 2011)

ABS, Datacubes from "Corrective Services" ("Persons in community-based corrections, by type of order")

ABS, Datacubes from "Corrective Services" ("Persons in full-time custody")

New South Wales (NSW)

NSW Department of Corrective Services / Dept of Prisons Annual Reports (1968-2009)

Simpson, Rachael, 'Parole: an overview' (Briefing Paper No 20/99, NSW Parliamentary Library Research Service 1999)

NSW Department of Corrective Services, '250 Parolees: Characteristics and performance' (Research Publication, No 3, June 1982)

NSW Department of Corrective Services - stat report 2008/2009

NSW Department of Corrective Services, Statistical Supplements to Annual Reports (2001/2002 - 2008/09: Tables 10, 12: inmates discharged (parole) after custodial sentence/monetary warrant)

NSW State Parole Authority *Annual Reports*, 2008, 2006, 2005

NSW Offenders Review Board 1991, 1993, 1995

NSW Parole Board 1996 - 2002

Australian Capital Territory (ACT)

ACT Department of Justice and Community Safety, Sentence Administration Board, *Annual Reports* (1978 -2010)

Northern Territory (NT)

NT Parole Board, *Annual Reports* (2001- 2010)

NT Department of Justice, *Annual Statistics* (2002 - 2009)

Queensland (QLD)

QLD Department of Community Safety, *Annual Reports* (2007/08, 2008/09)

QLD Parole Board, *Annual Reports* (2007/08 - 2009/10)

Western Australia (WA)

Ministry of Justice Statistical Reports, "Adult Offender Statistical Report" (1989 - 1996)

Department of Corrections, Annual Reports (1982 - 1988)

WA Parole Board, *Annual Report* (till 2006)

Prisoners Review Board of Western Australia, *Annual Report,s* (2007 - 2009)

Halden Report

Ferrante, A, M, Fernandez, J, A & Loh, N, S, N, *Crime and Justice Statistics for Western Australia: 1998*, Statistical Report (1998) (Crime Research Centre, The University of Western Australia, November 1999)

Loh, N, S, N, Maller, M. G & Walsh, M, R, J, *Community and Parole Orders: Western Australia 2006*. Annual Statistical Report Series No. 4/2009 (Crime Research Centre, The University of Western Australia, November 2009)

Victoria (VIC)

Adult Parole Board of Victoria, *Annual Reports* (2003/04 - 2008/09)

Provan, David, *Fifty Years of the Adult Parole System in Victoria 1957 to 2007* (Adult Parole Board, Department of Justice, Victoria, 2007)

Tasmania (TAS)

Parole Board of Tasmania, *Annual Reports* (2004/05 – 2009/10)

South Australia (SA)

SA Department for Correctional Services, *Annual Reports* (2005/06 - 2008/09)

TABLE OF FIGURES

Figure 1 Number of Persons in Community-Based Corrections	3
Figure 2 Persons in Community-Based Corrections per 100,000 Adult Population	4
Figure 3 Australia - Imprisonment and Community Corrections per 100,000 Adult Population.....	5
Figure 4 Ratio: No of persons in community-based corrections to every prisoner	5
Figure 5 NSW - Imprisonment and Community Corrections per 100,000 Adult Population	6
Figure 6 Vic - Imprisonment and Community Corrections per 100,000 Adult Population, 2002-2010	
Figure 7 Qld - Imprisonment and Community Corrections per 100,000 Adult Population, 2002-2010	7
Figure 8 SA - Imprisonment and Community Corrections per 100,000 Adult Population	7
Figure 9 WA - Imprisonment and Community Corrections per 100,000 Adult Population.....	8
Figure 10 Tas - Imprisonment and Community Corrections per 100,000 Adult Population	8
Figure 11 NT - Imprisonment and Community Corrections per 100,000 Adult Population.....	9
Figure 12 ACT - Imprisonment and Community Corrections per 100,000 Adult Population	9
Figure 13 Australia - Imprisonment and Community Corrections per 100,000 Adult Population.....	10
Figure 14 Community Based Corrections – Male rate per 100,000 adult population by State/Territory	12
Figure 15 Community Based Corrections – Female rate per 100,000 adult population by State/Territory	12